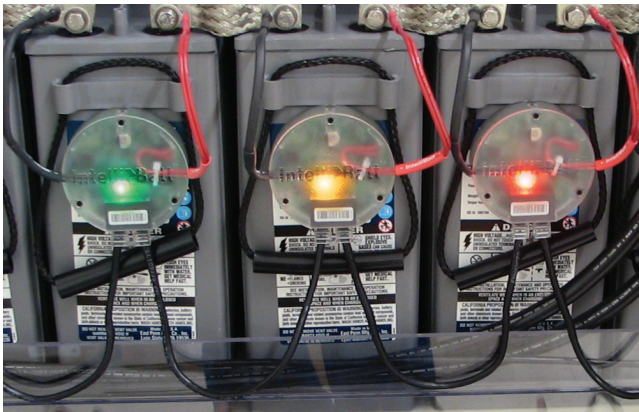


Introducing the Next Generation Web-based Battery Monitoring System

System overview

IntelliBatt's high performance Battery Monitoring System (BMS) continuously and securely collects detailed data on battery performance, and is cost effective and easy to install. The IntelliBatt BMS is comprised of two components: the IB Node and the IB Controller which also provide all the necessary test points to provide your operations with accurate data to determine battery health including:

- Voltage
- Impedance
- Temperature of each battery
- Ambient temperature
- Power outages
- Float current
- Ripple current
- Ripple voltage



The IntelliBatt B-Nodes map to a battery automated reporting or BAR system which monitors the health of each battery and provides visual confirmation of battery status: Green = good; Yellow = trending; Red = maintenance required.

IntelliBatt B-Node

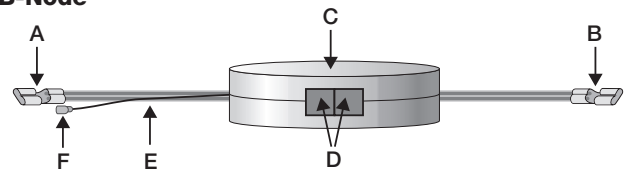
The unique and patented IB-Node design (B-Node) is a ready-to-go-unit by simply connecting the two power/test leads. The CANbus communications link provides a simple CAT5 “click-and-go” method to allow all the B-Node units to communicate with the IB-Controller. The B-Node can work independently or in series. The IB-Controller is designed to use very little real estate, and requires no costly conduit runs. It is small enough to be mounted inside or on top of a battery cabinet or directly within the frame of your battery rack.

When connecting the B-Node as a standalone unit, it begins to collect and store voltage, Ohmic, temperature and other data points for future historical analysis of the performance of that single battery (e.g. engine start, marine, aviation, utility application).

When connecting the B-Node in series, each unit is connected to each battery in the series. Upon connection the B-Nodes will power up, self identify to the battery they are connected to (e.g. battery 8 in a string of 120 batteries), and remain in standby mode until further instructions are assigned by the IB-Controller. All B-Nodes are connected together on a CANbus link using Ethernet cable. Simple connection of each B-Node together in a daisy chain type configuration will complete the hardware installation (by either the first or last B-Node of the series) to the IB-Controller.

Installation Components

B-Node



A Negative Terminal Push On Spade Connector

B Positive Terminal Push On Spade Connector

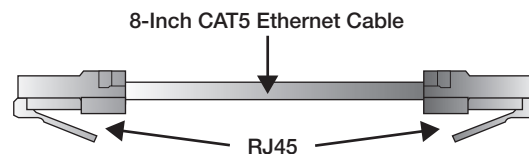
C Case

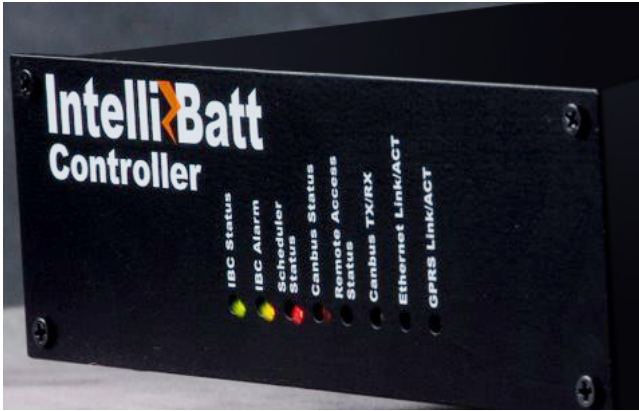
D CANbus Link Ports RJ45 CAT5 Jack(s)

E Power / Test Leads

F Temperature Sensor Push On (Factory connected)

CANbus Link Cable

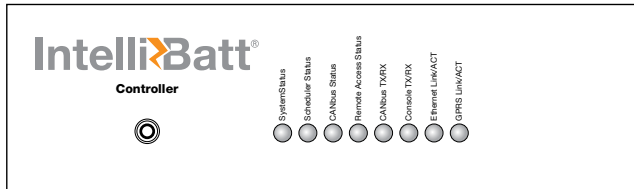




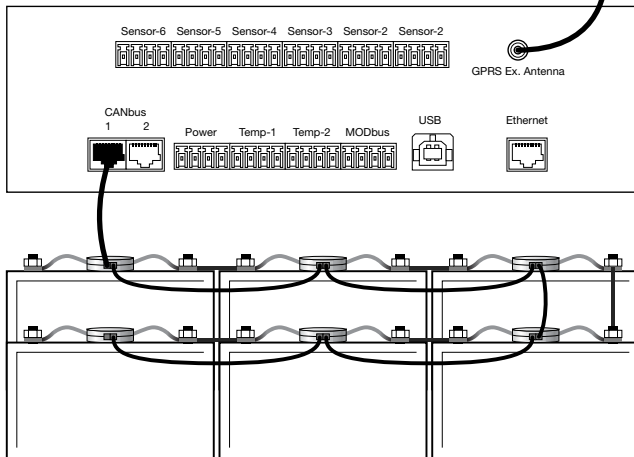
IB-Controller

The IB-Controller is positioned at the head of the B-Node series. It has the ability to communicate with the B-Nodes independently or collectively. With its user definable settings menu each data point can be set for test time independently of each other. The IB-node controller can send data on a scheduled time date or be securely polled anytime after installation is complete.

Front

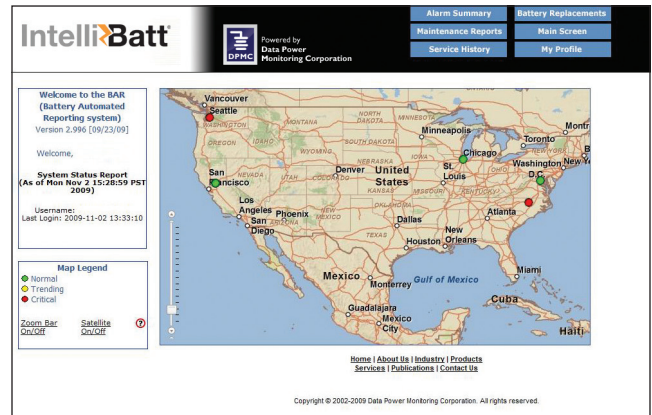


Back, showing system setup (not to scale)

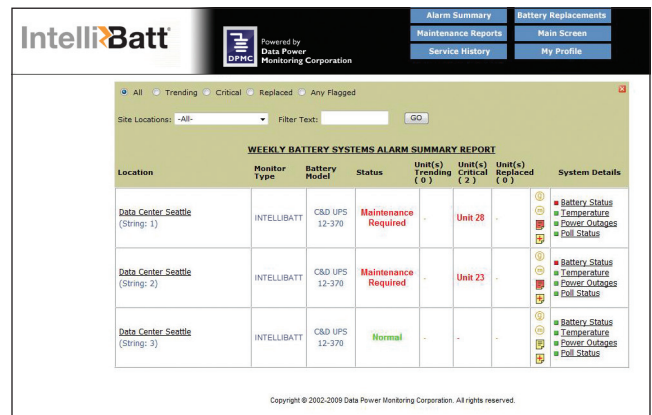


**Superior Hardware Performance
Complemented by Web-Based Reporting**

Embedded in the IntelliBatt hardware components is our ability to deliver remote, web-based reporting and human analysis—powered by sister company Data Power Monitoring’s patented BAR system. The BAR monitors the health of every battery and the monitoring system itself. It polls each battery in every battery string in each facility, every day. Complimented by the IntelliBatt team of battery experts which offer unlimited support and notification in advance of battery trends that may result in failure, your operation is assured of 100% uptime. Included with the BAR is complete asset management of the battery system down to detail history and replacement records of each unit—which allows IntelliBatt to extend the life of your battery asset investment for maximum ROI.



View details for a particular site by clicking on the mapped location icon or on “Alarm Summary” to see a summary alarm log for each battery string at that site.



View weekly in-depth summary reports summarizing battery health and performance.

IntelliBatt

181 Third Street, Suite 150
San Rafael, California 94901
1-415-839-7270 1-877-4BATTPHONE/1-877-422-8874
www.intellibatt.com sales@intellibatt.com